



JUDY BELASCO

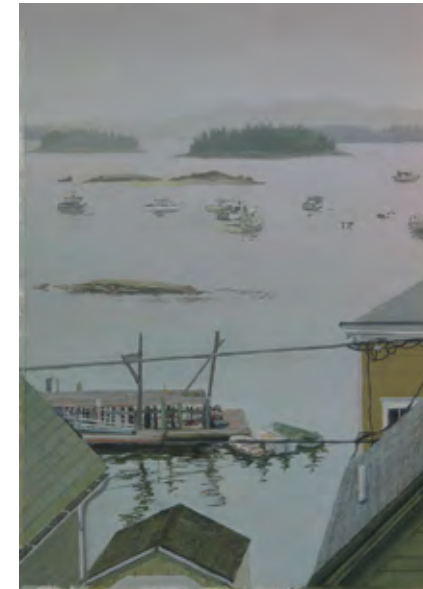
COURTHOUSE GALLERY  
FINE ART

# JUDY BELASCO

## **Maritime Light**

JUNE 26–JULY 21, 2013

Essay by Karin Wilkes



*Harbor View, 2013, oil on panel, 10 x 7 inches*

**COURTHOUSE GALLERY**  
**FINEART**

6 court street ellsworth, maine 04605 [courthousegallery.com](http://courthousegallery.com) 207 667 6611



*Downeast Low Tide*, 2013, oil on panel, 10 x 18 inches



*Boathouse*, 2013, oil on panel, 10.5 x 12.5 inches

# JUDY BELASCO

## Maritime Light

Judy Belasco's new body of work, *Maritime Light*, reflects her interest in tonalism. This artistic style emerged in the 1880s when American artists began to use muted natural tones to dramatically portray the poetic character of landscape forms. Dark, neutral hues such as gray, brown, or blue, often dominated compositions by artists associated with the style, including Martin Heade and James McNeill Whistler.

*Maritime Light* also draws on Belasco's lifelong connections to the New England coast, first in Massachusetts, and later in Maine. A third generation painter, Belasco's artistic roots began in Buck's County Pennsylvania where her grandfather, Roy Cleveland Nuse, raised his family of six children and maintained a studio. Nuse was a successful portraitist and impressionist landscape painter, and a professor at the Pennsylvania Academy of the Fine Arts.

Her father, Oliver Nuse, was also a distinguished Pennsylvania artist and expressionist painter. As a child Belasco remembers:

*There were paintings everywhere, propped up against furniture, hanging all over the walls. Inviting crits was a common practice my father encouraged. The only books to read were big art books, so I grew up learning about art history. The studio was in the house, and it was a very special and totally different place exclusive to my father. We respected the "art zone," but we were always welcomed when we wanted to create also.*



Lowest Tide, 2013, oil on panel, 10.5 x 9.5 inches

COVER Deer Isle, 2012, oil on canvas, 18 x 27.5 inches



Deer Isle Harbor, 2013, oil on panel, 10.5 x 17 inches



Chartes, 2013, oil on panel, 12 x 7 inches

Nuse was active in several artists' colonies, and Belasco grew up in these colonies—Germantown, Pennsylvania, during the winter, and Gloucester, Massachusetts, during the summer. Her father enjoyed painting the fishing docks around Gloucester, and as a teenager, Belasco began to draw and paint with him on outings, an experience she credits for her love of boat docks and marine scenes.

In preparation for this show, Belasco worked with a self-imposed limited palette of very subtle semi-neutrals colors, using soft translucent greens, silvery greys, and muted violets. Although she typically works small, Belasco transitioned to a larger format with *Schoodic Autumn* and *Deer Isle*, a dramatic scene where the interplay of water, sky, and light is shaped by atmospheric weather, an environment especially suited to the muted colors of tonalism.

Today, Belasco divides her time between Philadelphia, and Stockton Springs, Maine. During the summer, she roams the coast of Maine in search of inspiration (Schoodic Peninsula is a favorite), preferring the low light of early morning or evening, a central component of her work. Here, Belasco finds an expressive vocabulary—saltwater estuaries winding their way toward the horizon, an isolated boathouse, soft luminous fog concealing distant islands, dinghies at low tide, and harbors teeming with lobster boats.

Her singular vision and commitment to the sublime makes Belasco's work unique amongst the contemporary landscape painters working in Maine today. Belasco's *Maritime Light* is a body of work that must be seen in person to fully appreciate.

—Karin Wilkes  
*Courthouse Gallery Fine Art*



Low Tide Dock, oil on panel, 10 x 17 inches



*Fog Bound Bay*  
2013  
oil on panel  
8.5 x 19 inches



*Downeast Bay*, 2013, oil on panel, 8 x 22.5 inches



*Downeast Coast*  
2012  
oil on panel  
12.5 x 14 inches



*Schoodic Note*  
2013  
oil on panel  
6.5 x 7 inches



*Schoodic Autumn*, 2012, oil on canvas, 24 x 45 inches





*Still Marsh*, 2013, oil on panel, 6 x 15 inches



*Early Morning*, 2013, oil on panel, 5 x 11 inches



*Downeast Dusk*, 2013, oil on panel, 10 x 16 inches



*Estuary*, 2013, oil on panel, 10 x 22.5 inches



*Return III*, 2013, oil on panel, 6 x 16 inches



*Mt. Desert Bay*, 2012, oil on canvas, 16 x 32 inches



# JUDY BELASCO

BORN Doylestown, Pennsylvania 1942

## SOLO EXHIBITIONS

Courthouse Gallery Fine Art, Ellsworth, ME, 2009, '11, '13

F.A.N. Gallery, Philadelphia, PA, 2000, 2003

## GROUP EXHIBITIONS

Courthouse Gallery Fine Art, Ellsworth, ME, 2007, '08, '09, '10, '11, '12

Mulford Gallery, Rockland, ME, 2007, '08, '09, '10

Susan Maasch Fine Art, Portland, ME, 2010

Betts Gallery, Invitational show, Belfast, ME, 2010

F.A.N. Gallery, Philadelphia, PA, 1999, 2000, '02, '08, '09

McGrath Dunham Gallery, Castine, ME, 1998, 2000, '01, '02, '03, '04, '05, '06

Maine Art Gallery, Kennenbunkport, ME, 2004

SYDA Foundation (Invitational), S. Fallsburg, NY, 2003

5th Annual International Fine Arts Show, Boston, MA, 2001

4th Annual International Fine Art Show, Boston, MA, 2000

3rd Annual International Fine Art Show, Boston, MA, 1999

Museum of Modern Art, (Photography exhibition) New York, NY, 1971

## PUBLIC COLLECTIONS

Germantown Friends School

MBNA

Pennsylvania Academy of Fine Arts

## PRIVATE COLLECTIONS

Belasco paintings are represented in numerous private collections

## EDUCATION

Maine Photographic Workshop: Fine Digital Print with John Paul Caponigro, 2005

Private Study: Maine Landscape Painting with Linden Frederick, 1996–2004

Maine Photographic Workshop: Fine Digital Print, 2004

Barnstone Studios: Classical Drawing and Dynamic Symmetry, 1993–1994

Philadelphia College of Art, BFA, Photography Major, 1969–1972

Philadelphia College of Art: Painting Major, 1960–1963

## WORK EXPERIENCE

Art Teacher, Germantown Friends School, Philadelphia, PA 1976–2008



*Sunrise, 2013, oil on panel, 10 x 10 inches*

COURTHOUSE GALLERY  
FINE ART

6 court street ellsworth, maine 04605 [courthousegallery.com](http://courthousegallery.com) 207 667 6611