



COLIN PAGE DOWN EAST

COURTHOUSE GALLERY
FINE ART

COVER

Come to the Water
oil on canvas
30 x 34 inches
2011

OPPOSITE

Hancock Grocery
oil on canvas
12 x 16 inches
2011

COLIN PAGE

DOWN EAST

AUGUST 10–SEPTEMBER 11, 2011

Essay by Connie Hayes



COURTHOUSE GALLERY
FINEART

court street ellsworth, maine 04605 courthousegallery.com 207 667 6611

COLIN PAGE DOWN EAST



Stonington Mansards, oil on canvas, 16 x 12 inches, 2011

It is easy to look at a Colin Page painting with an assumption that its freshness results from just another joyous day in the life of an artist. You might even picture Colin singing or whistling at his easel. But often what seems to be a painter's most spontaneous work hides layers of struggle. These hidden layers can be actual paint: applied, removed, re-applied and tested again to attain the best balance of warm-cool, thick-thin, large-small, bright-neutral, reworked in pursuit of an intuitive sense that the artist "got it just right." These efforts can also reflect other choices: selecting a day with the right light and weather and a location with an interesting subject, the right amount of shade, and an absence of glare; having at hand the right kinds of brushes and paints, enough insect spray and sun screen; adjusting layers of clothes as the day progresses; and allocating time before the light changes to accomplish what the artist set out to do. Yes, there are days when a canvas almost seems to paint itself, but usually, sustained focus and effort out-weigh ease and comfort. Colin only makes it look easy.



Schoodic Rocks, oil on canvas, 12 x 16 inches, 2011



Arrival of Evening, oil on canvas, 16 x 12 inches, 2011

Colin makes art directly from his perceptions and intelligent forethought. He can land paint with confidence, such as nailing the weight of a rock, the sparkle of water, the glow of light on a building. He articulately “speaks” the painter’s language of color and form to convey what he sees, and adapts to a wide range of geography and subject with nimble agility. But he is much more than facile. Increasingly, Colin’s paintings are planned, improvised, layered, nuanced, and sometimes, deliberately restrained. Red may seem especially hot, or blue especially pulsing, but the foil for their glow develops from the complexity of his neutral grays and ochers that makes the full chroma of his colors come alive. He refreshingly takes contrived heaviness out of painting, but not the substance and solidity translated from the world around him.

—Connie Hayes

Connie Hayes is a painter living in Maine, was on the faculty at the Maine College of Art for ten years, holds an MFA from Tyler School of Art and was a fellow at the Skowhegan School of Painting and Sculpture.



Waterfront Windows, oil on canvas, 30 x 40 inches, 2011



Swim Rock, oil on canvas, 20 x 48 inches, 2011



Acadia's Rocks, oil on canvas, 28 x 36 inches, 2011



Ocean's Edge
oil on linen
11 x 14 inches
2011



Surf Rock
oil on linen
11 x 14 inches
2011



Bridge to Deer Isle, oil on canvas, 12 x 16 inches, 2011



A Fence of Birches
oil on canvas
40 x 30 inches
2011

OPPOSITE

Blue Hill's Blue Shadows
oil on canvas
24 x 24 inches
2011





Colin Page painting en plein air.

COLIN PAGE

BORN Kalamazoo, Michigan 1977

SOLO EXHIBITIONS

Courthouse Gallery Fine Art, Ellsworth, ME, 2011

F.A.N. Gallery, Philadelphia, PA, 2005, '06, '07, '08, '09

Dowling Walsh Gallery, Rockland, ME, 2008, '09

Jameson Gallery, Portland, ME, 2008

MJ Art, Beacon, NY, 2007

Camden Falls Gallery, Camden, ME 2006, 2007

SELECTED GROUP EXHIBITIONS

Courthouse Gallery Fine Art, Ellsworth, ME, 2008, '09, '10, '11

Cape Cod Museum of Art, *Creative Convergence, Provincetown*, Dennis, MA 2010, '11

Village Gallery, "Maui Plein Air Invitational," Lahaina, HI 2010, '11

Galleria Gardner, San Miguel de Allende, Mexico, 2009

Copley Society, Boston, MA, 2008, 2009

Addison Gallery, Cape Cod, MA, 2009

Provenance NYC, New York, NY, 2008

Farnsworth Museum of Art, Rockland, ME, 2008

Dowling Walsh Gallery, Rockland, ME, 2007

Camden Falls Gallery, Camden, ME, 2003, '05

Maine Art Gallery, Wiscasset, ME, 2003

Kane Marie Gallery, Virginia Beach, VA, 2003

West Island Gallery, Georgetown, ME, 2003

Bowery Gallery, New York, NY, 2001

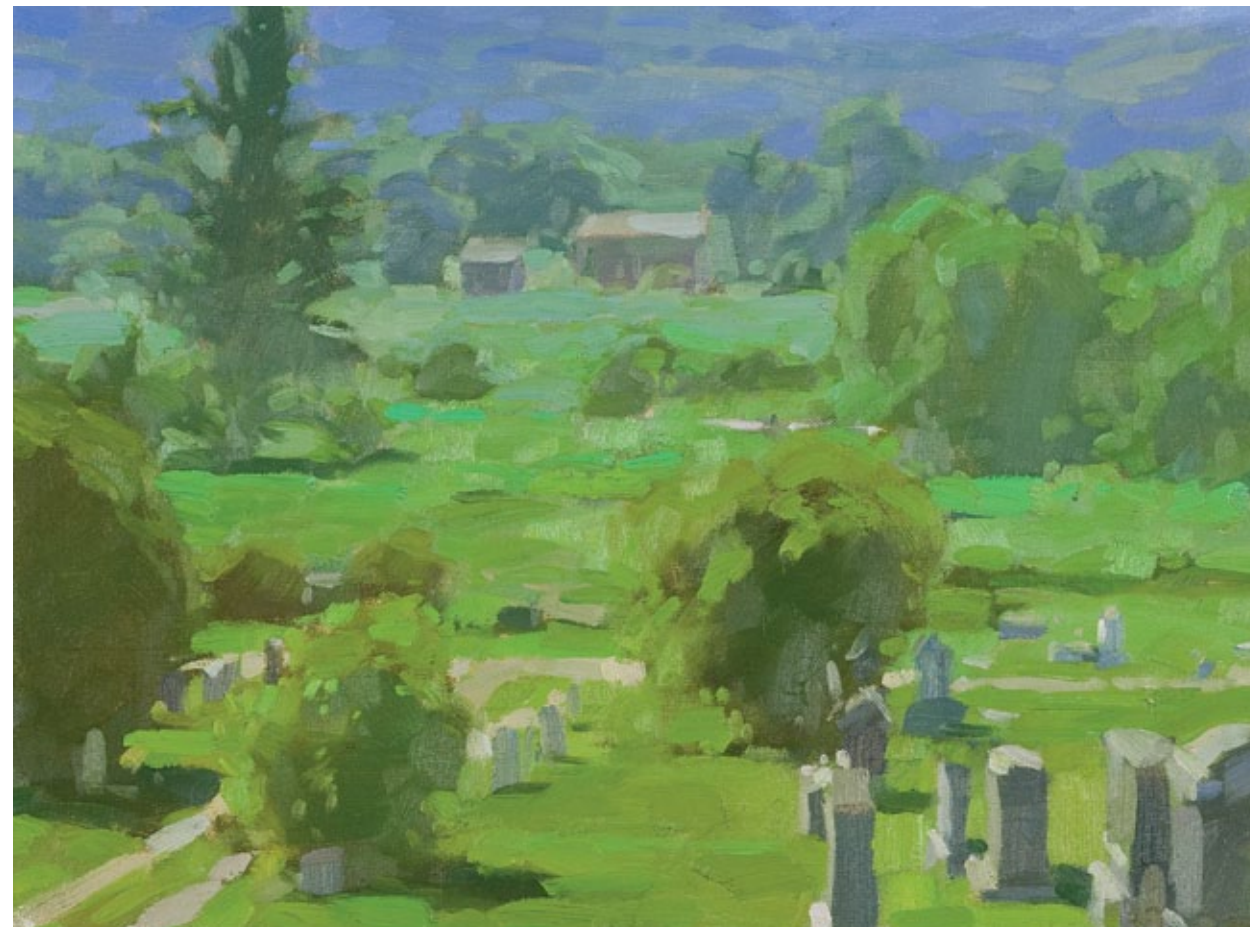
Baltimore Museum of Art, Baltimore, MD, 2001

EDUCATION

The Cooper Union for the Advancement of Science and Art, NY, BFA, 2000

Rhode Island School of Design, RI, 1997

Baltimore School for the Arts, MD, 1995



Memory Valley, oil on canvas, 12 x 16 inches, 2011



Airstream, oil on canvas, 12 x 16 inches, 2011

COURTHOUSE GALLERY
FINEART

court street ellsworth, maine 04605 courthousegallery.com 207 667 6611