



JUDY BELASCO

COURTHOUSE GALLERY FINE ART



*Acadia Lake, 2009*  
oil on panel  
8.5 x 10.5 inches

COVER  
*Seal Inlet, 2009*  
oil on panel  
11.5 x 27 inches

OPPOSITE  
*High Wave, 2009*  
oil on panel  
8 x 12 inches

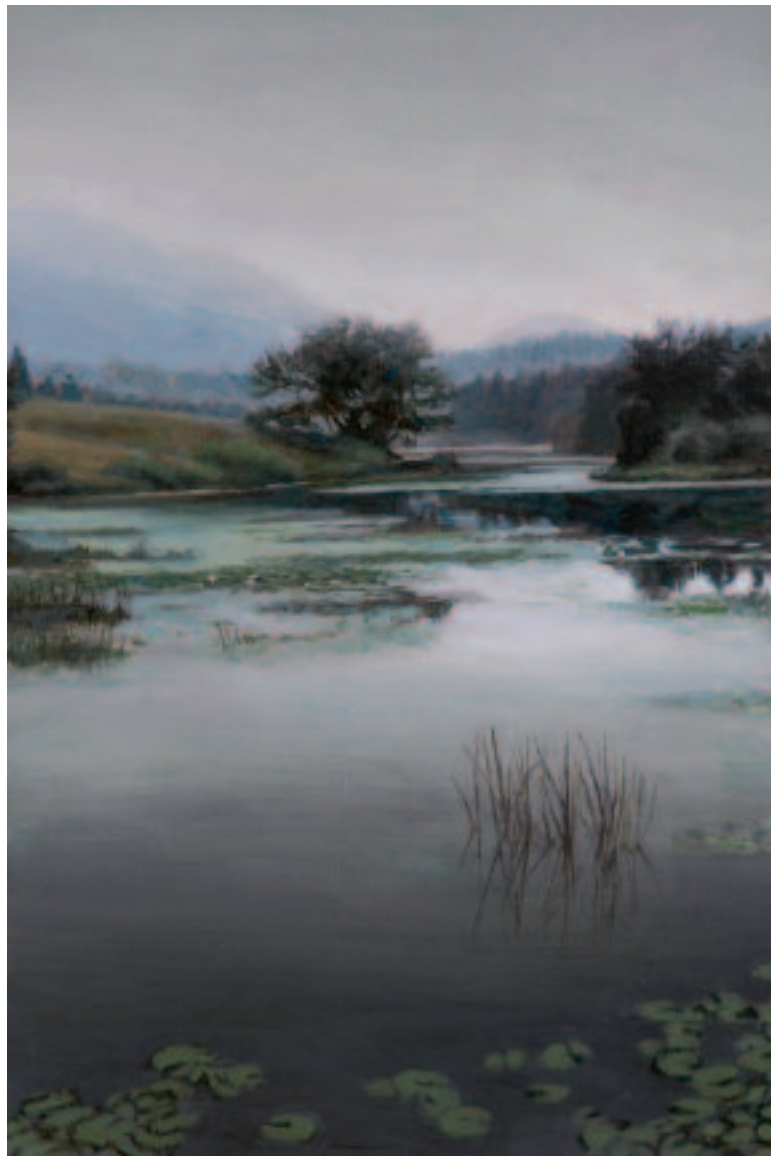
# JUDY BELASCO

JULY 19 - AUGUST 12, 2009

essay by Karin Wilkes



COURTHOUSE GALLERY  
FINEART



**Judy Belasco** paints subtle, yet majestic coastal scenes. Each canvas brings the viewer to a quiet place, where the air is heavy, your arms and face moist, and the fog aromatic. The time of day is most often late afternoon or near dusk, when stillness prevails and the outside world disappears, if only for a few moments.

Belasco, who studied painting and photography at the Philadelphia College of Art, spends her summers exploring the coast of Maine in search of these special places. With camera and sketchbook in hand, she captures the moment, and then recreates the experience on canvas back in her studio.

Belasco is drawn to places where the interplay of water, sky and light are shaped by atmospheric weather. In *Seal Inlet*, a winding salt-water river draws the viewer into the painting, toward the horizon. The soft luminous fog all but makes the distant mountains disappear, and an egret standing in the river offers perspective.

Belasco creates her own form of drama by using fog or mist to separate foreground from the background, reality from spirituality. Yet, her goal is to create a place where these two realms coexist. Belasco achieves that harmony by using a sophisticated color palette that subtly binds them together.

Most of Belasco's paintings, like *East Acadia*, which measures just 11 x 7 inches, are small. The scenes, however, are anything but. Multiple layers of color are

*East Acadia*, 2009  
oil on panel  
11 x 7 inches

applied over a monochromatic base that becomes marshes, lily pads, grasses, trees, and the beautiful curtain of mist hanging over the horizon. Belasco honed her color theory and painting technique by studying with noted Maine artist Linden Frederick for several years.

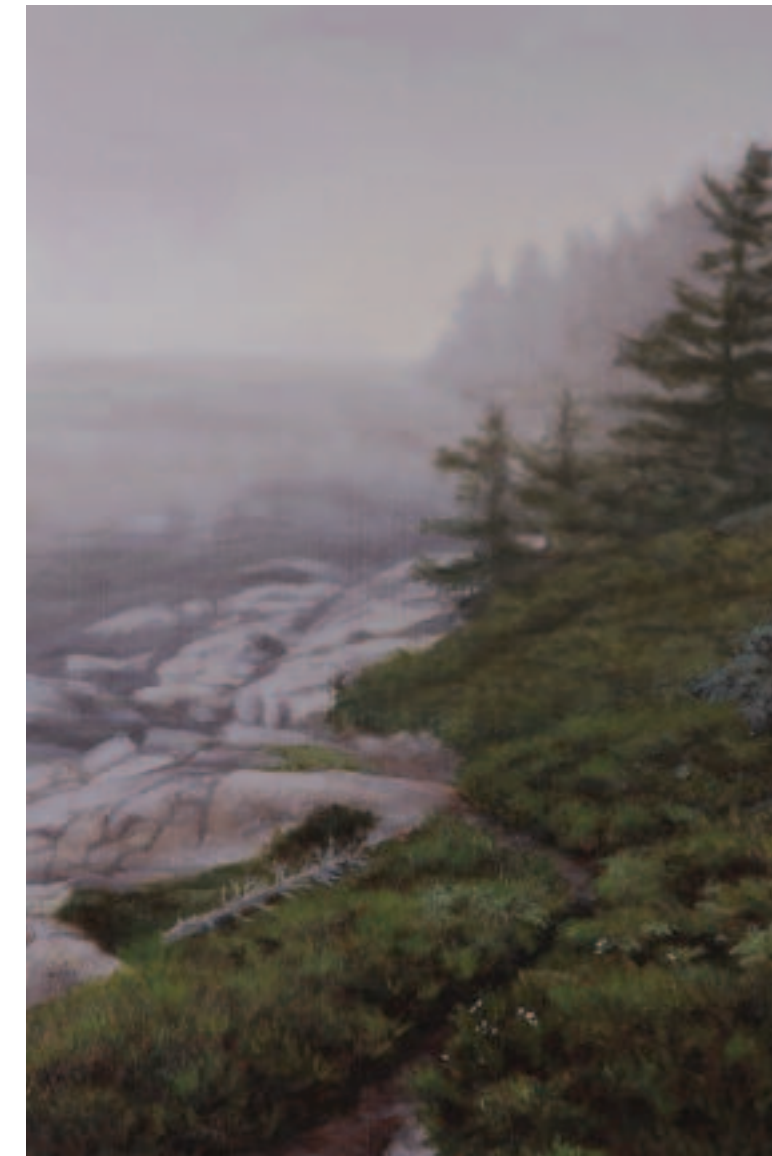
Belasco, who grew up surrounded by art, knew at an early age that she wanted to be an artist. The family lived in artist's colonies in Germantown, Pennsylvania, during the winter and Gloucester, Massachusetts, and Maine during the summer. Both Belasco's father, Oliver Nuse, and her grandfather, Roy Nuse, were fine artists. Roy was a Pennsylvania Impressionist of the New Hope School and taught at the Academy of Fine Arts in Philadelphia. As a child, Belasco remembers being in awe of his paintings.

In 2008, Belasco retired from teaching to paint full time. She divides her time between Philadelphia and Maine, where she loves to explore the woods and coastline. Belasco credits her family's artistic legacy for shaping her love of nature and the arts.

Nature is Belasco's source of inspiration—its beauty, simplicity, and wildness—and she shares her reverence through her artwork. Belasco hopes this body of work will nurture, soothe, and refresh the viewer, bringing them peace and pause.

*Karin Wilkes is the director and owner of Courthouse Gallery Fine Art*

*On Island*, 2009  
oil on panel  
10 x 6.5 inches





*Original Island, 2009*  
oil on panel  
6.5 x 15 inches



*Light at Schoodic, 2009*  
oil on panel  
9.5 x 20.5 inches





*Bruny Island, 2009*  
oil on panel  
8 x 19 inches

OPPOSITE  
*Bay at Sunset, 2009*  
oil on canvas  
30 x 30 inches





*Bass Harbor, 2009*  
oil on panel  
6.5 x 19 inches



*Salt Marsh, 2009*  
oil on panel  
6.5 x 16.5 inches



*Bass Inlet*, 2009  
oil on panel  
10.5 x 11 inches

OPPOSITE  
*Back Inlet*, 2009  
oil on panel  
7 x 13.5





# JUDY BELASCO

## BORN

Doylestown, Pennsylvania 1942

## EDUCATION

Maine Photographic Workshop: Fine Digital Print with John Paul Caponigro, 2005

Private Study: Maine Landscape Painting with Linden Frederick, 1996-2004

Maine Photographic Workshop: Fine Digital Print, 2004

Barnstone Studios: Classical Drawing and Dynamic Symmetry, 1993-1994

Philadelphia College of Art, BFA, Photography Major, 1969-1972

Philadelphia College of Art: Painting Major, 1960-1963

## WORK EXPERIENCE

Art Teacher, Germantown Friends School, Philadelphia, PA 1976-2008

## ONE PERSON EXHIBITS

Courthouse Gallery Fine Art, Ellsworth, ME, 2009

F.A.N. Gallery, Philadelphia, PA, 2003

F.A.N. Gallery, Philadelphia, PA, 2000

## GROUP EXHIBITIONS

Courthouse Gallery Fine Art, Ellsworth, ME, 2007, '08

Mulford Gallery, Rockland, ME, 2007, '08

F.A.N. Gallery, Philadelphia, PA, 1999, 2000, '02, '08

McGrath Dunham Gallery, Castine, ME, 1998, 2000, '01, '02, '03, '04, '05, '06

Maine Art Gallery, Kennebunkport, ME, 2004

SYDA Foundation (Invitational), S. Fallsburg, NY, 2003

5th Annual International Fine Arts Show, Boston, MA, 2001

4th Annual International Fine Art Show, Boston, MA, 2000

3rd Annual International Fine Art Show, Boston, MA, 1999

Museum of Modern Art, (Photography Exhibit, group show) New York, NY, 1971

## PUBLIC COLLECTIONS

Germantown Friends School

MBNA

Pennsylvania Academy of Fine Arts

## PRIVATE COLLECTIONS

Belasco paintings are represented in numerous private collections



*Acadia Point, 2009*

oil on panel

9 x 12 inches

## OPPOSITE

*Distant Island, 2009*

oil on panel

9.5 x 8 inches







Pier in Fog, 2009, oil on panel, 7.5 x 10.5 inches